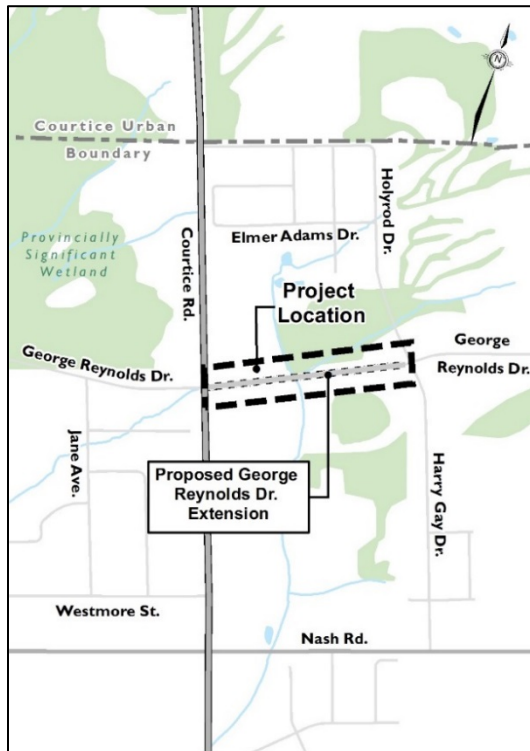


Clarington

Notice of Public Information Centre

Schedule 'B' Municipal Class Environmental Assessment

George Reynolds Drive Extension from Courtice Road to Harry Gay Drive, Courtice



This map shows the proposed connection of George Reynolds Drive from Courtice Road to Harry Gay Drive.

The Municipality of Clarington is undertaking a Schedule 'B' Municipal Class Environmental Assessment (EA) in accordance with the Municipal Engineers Association's Municipal Class EA document (2015). The purpose of this study is to investigate alternatives for connecting George Reynolds Drive from Courtice Road to Harry Gay Drive.

The study area is shown on the included map.

This new connection is proposed to support east-west traffic, transit, and active transportation systems across the Hancock Neighbourhood and northern Courtice. These requirements have been identified in the Hancock Neighbourhood Design Plan (1998), the Clarington Transportation Master Plan (2016), and in Clarington's Official Plan (as adopted by Council, 2016).

Public Information Centre (PIC)

The PIC will consist of an informal drop-in centre with displays showing the evaluation of alternative solutions as well as a preferred solution. Members of the public are invited to meet the project team, review the presented alternatives, and discuss issues related to the project.

Information about the PIC is available at <http://www.clarington.net/community> and provided as follows:

Date: October 25, 2017
Time: 5:30 p.m. to 7:30 p.m.
Location: Clarington Public Library – Courtice Branch in the Great Room
2950 Courtice Rd
Courtice, ON L1E 2H8

The Corporation of the Municipality of Clarington
40 Temperance Street, Bowmanville, Ontario L1C 3A6 T 905-623-3379



Should you have any questions or concerns regarding the upcoming PIC, please contact:

Ron Albright, P. Eng.
Assistant Director, Engineering Services
Municipality of Clarington
40 Temperance Street
Bowmanville, ON L1C 3AC
Phone: 905-623-3379 ext. 2305
Fax: 905-623-9282
Email: ralbright@clarington.net

Michael Murray, P. Eng.
Project Manager
CIMA+
3027 Harvester Road, Suite 400
Burlington, ON L7N 3L6
Phone: 289-288-0287 ext. 6836
Fax: 289-288-0285
Email: michael.murray@cima.ca

If there are any concerns about the accessibility of this information, please contact Clarington's Accessibility Coordinator at 905-623-3379 ext. 2131

Under the Municipal Freedom of Information and Protection of Privacy Act and the Environmental Assessment Act, any personal information such as name, address, telephone number and property location included in a submission may become part of the public record for this matter and will be released, if requested, to any person, unless otherwise stated in the submission.

Notice issued on: October 11, 2017