

Soper Springs Secondary Plan and Integrated EA Study - Project resuming

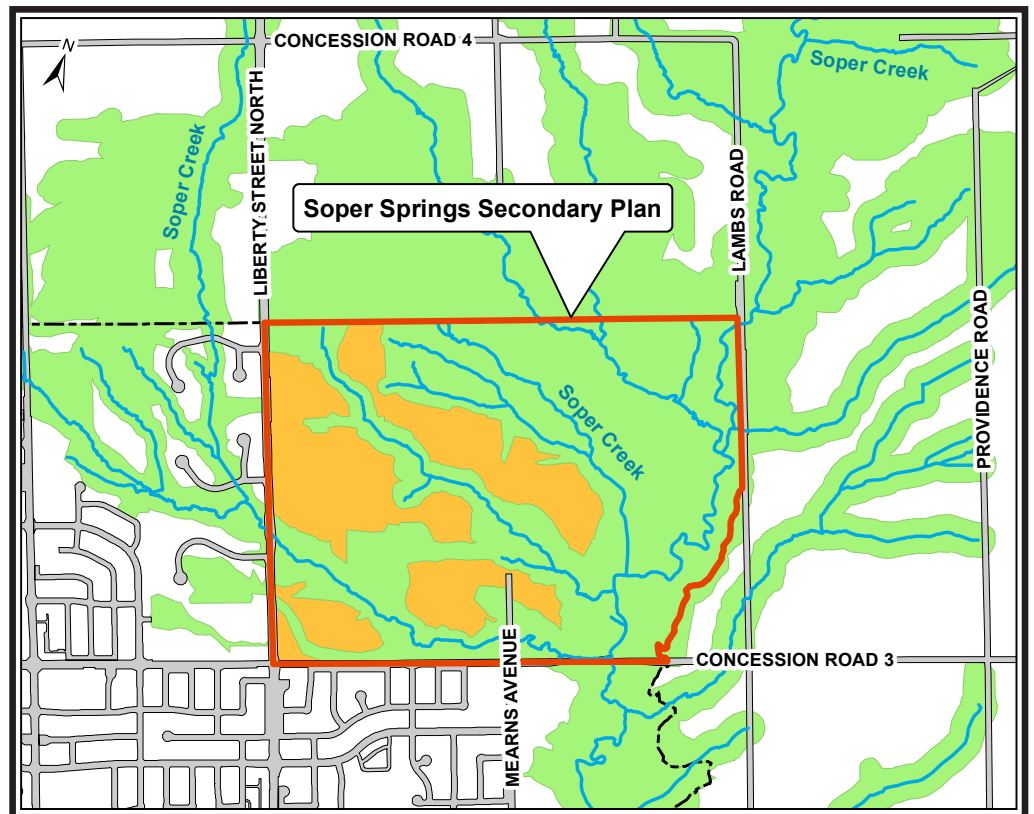
Public Information Centre #2



Wednesday, December 15, 2021 at 6:30 p.m.
Join us online or by phone.

Join us at Public Information Centre #2 to learn about the future of the Soper Springs neighbourhood, located in north Bowmanville.

The Soper Springs Secondary Plan is an opportunity to create a cohesive and sustainable neighbourhood that balances where people live with the surrounding natural environment. Preserving the natural environment is a top priority.



You must register in advance at www.clarington.net/SoperSpringsMeeting to receive a link to the online meeting.

For more information, contact Emily Schaefer or Carlos Salazar at 905-623-3379 or email sopersprings@clarington.net.

Notice of EA Study Commencement

The Municipality of Clarington is undertaking this Secondary Plan, including an Environmental Assessment (EA) for new road infrastructure subject to Schedule 'C' of the Municipal Class EA process. The study proceeds using the integrated approach to Environmental Assessment, which is an approved process under the Environmental Assessment Act that ensures requirements under both the Environmental Assessment Act and the Planning Act are met.

Under the Municipal Freedom of Information and Protection of Privacy Act, any personal information, such as name, address, telephone number, and property location included in a submission, may become part of the public record for this matter. Therefore, if requested, it will be released to any person unless otherwise stated in the submission.

To obtain this information in an alternate format, call 905-623-3379
ext. 2131, TTY: 1-844-790-1599.

Clarington