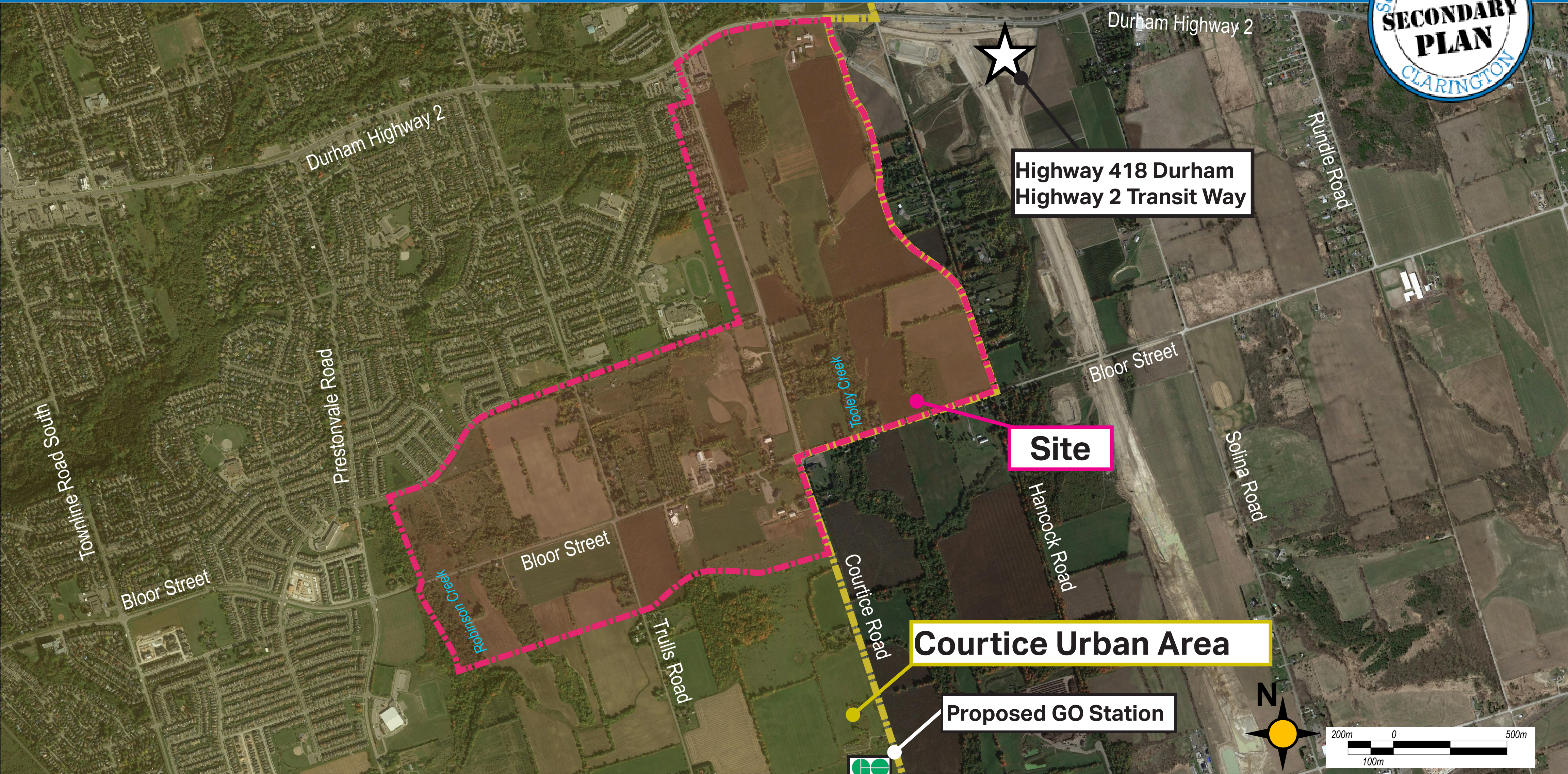


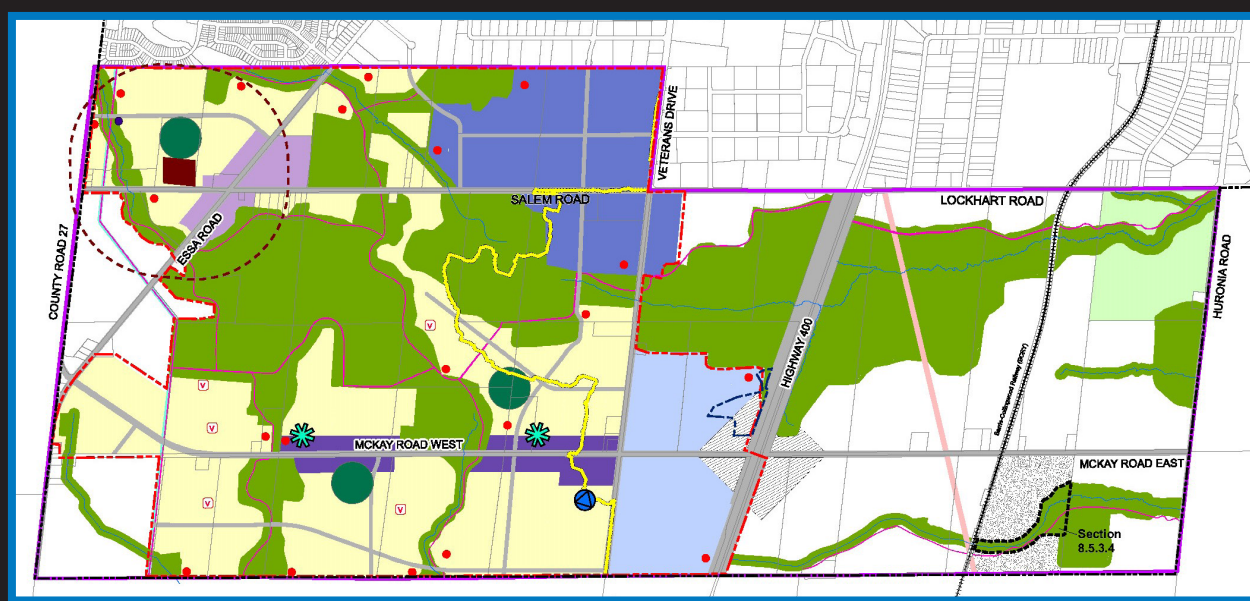
Southeast Courtice Secondary Plan & Environmental Assessment



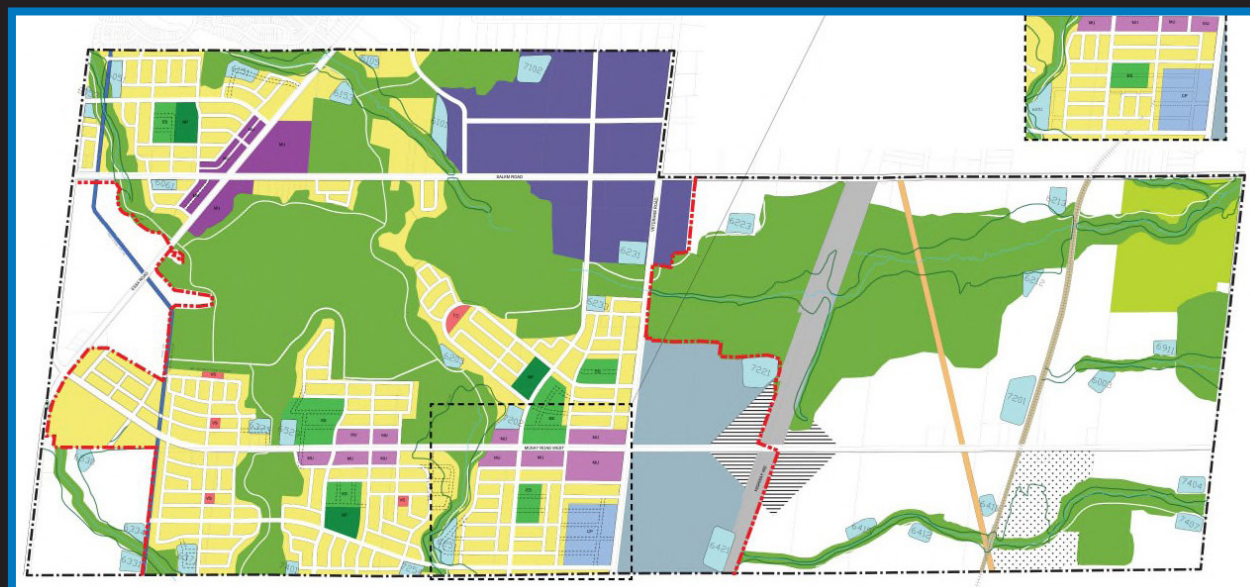
What is a Secondary Plan?

A detailed planning framework for:

- Roads
- Environment
- Residential density
- Employment
- Parks
- Schools
- Community Use
- Infrastructure



Schedule 8C - Land Use Plan (May 2016)



Appendix 8B - Masterplan (March 2016)

Example : City of Barrie Salem Secondary Plan June 2014

What is an Environmental Assessment (EA) ?

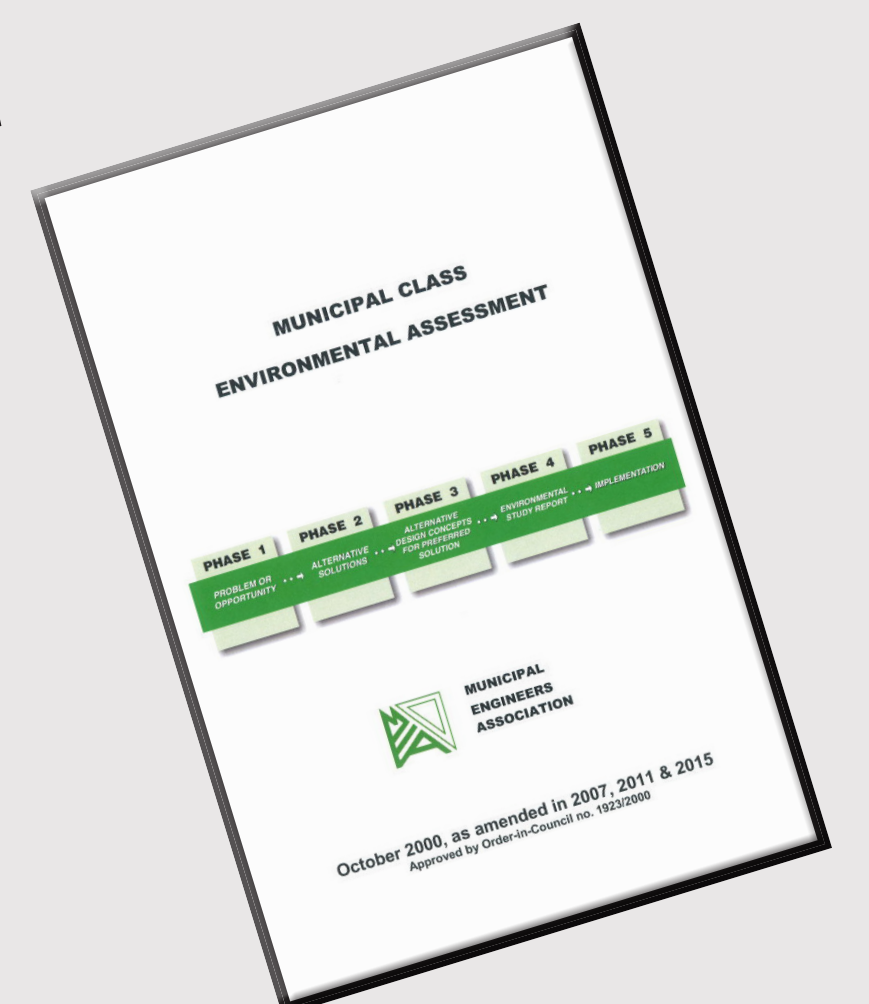
An EA is a multi-phased study identifying the potential positive and negative environmental effects of municipal infrastructure projects



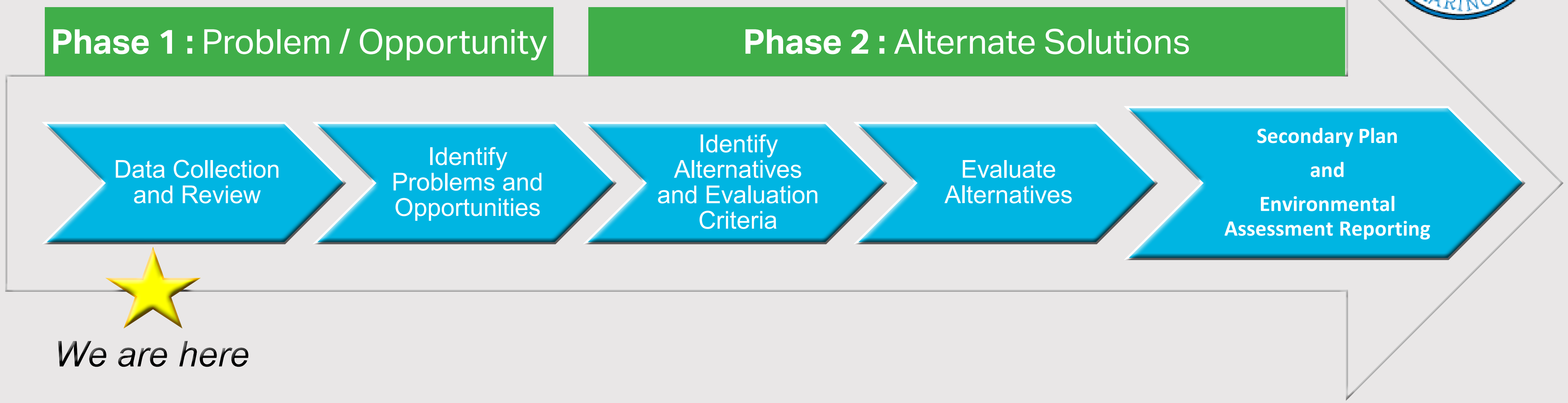
What is an Integrated Approach to the Secondary Plan and Environmental Assessment ?

Coordinating the planning and approval processes for a proposed development so that it satisfies the requirements of the Planning Act and the Environmental Assessment Act simultaneously.

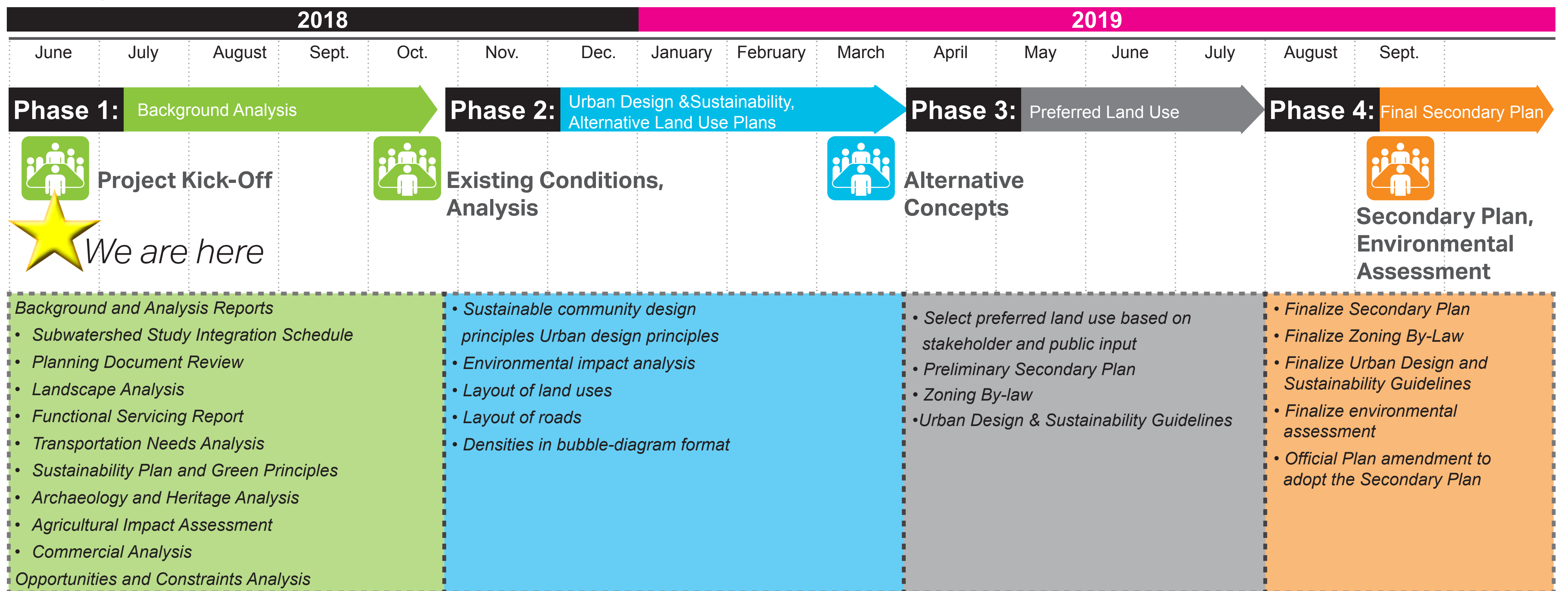
The **"Integrated Approach"** is outlined in the Municipal Class EA document (Municipal Engineers Association, October 2000, as amended in 2007, 2011 and 2015) which is an approved process under the Environmental Assessment Act.



Integrated EA & Secondary Plan Process



Project Schedule



How can you help?



We are interested in what you have to say!

- » As you move through the information displayed, we encourage you to ask questions and provide feedback.
- » Attend and give us your ideas, suggestions, likes and dislikes at the three public meetings shown in the above schedule"
- » Visit our website for updates and an opportunity to submit your feedback at www.clarington.net/southeastcourtrice or email us at SoutheastCourtice@clarington.net



Ask any member of the Project Team. If we do not have the answer, we will make sure to get it for you!



The Clarington Official Plan directs the Municipality to address climate change and become a more sustainable community. The Priority Green initiative provides a framework to guide development in minimizing the consumption of energy, water, and other resources and reducing impacts on the natural environment.

- Promote renewable energy
- Reduce the heat island effect
- Increase building efficiency
- Divert construction waste
- Recover rainwater and greywater
- Provide bicycle parking
- Create electric vehicle parking
- Design mixed-use, walkable communities



Healthy urban forest canopy which reduces the urban heat island effect.



Energy efficient building design which reduces heating, cooling and light loads.



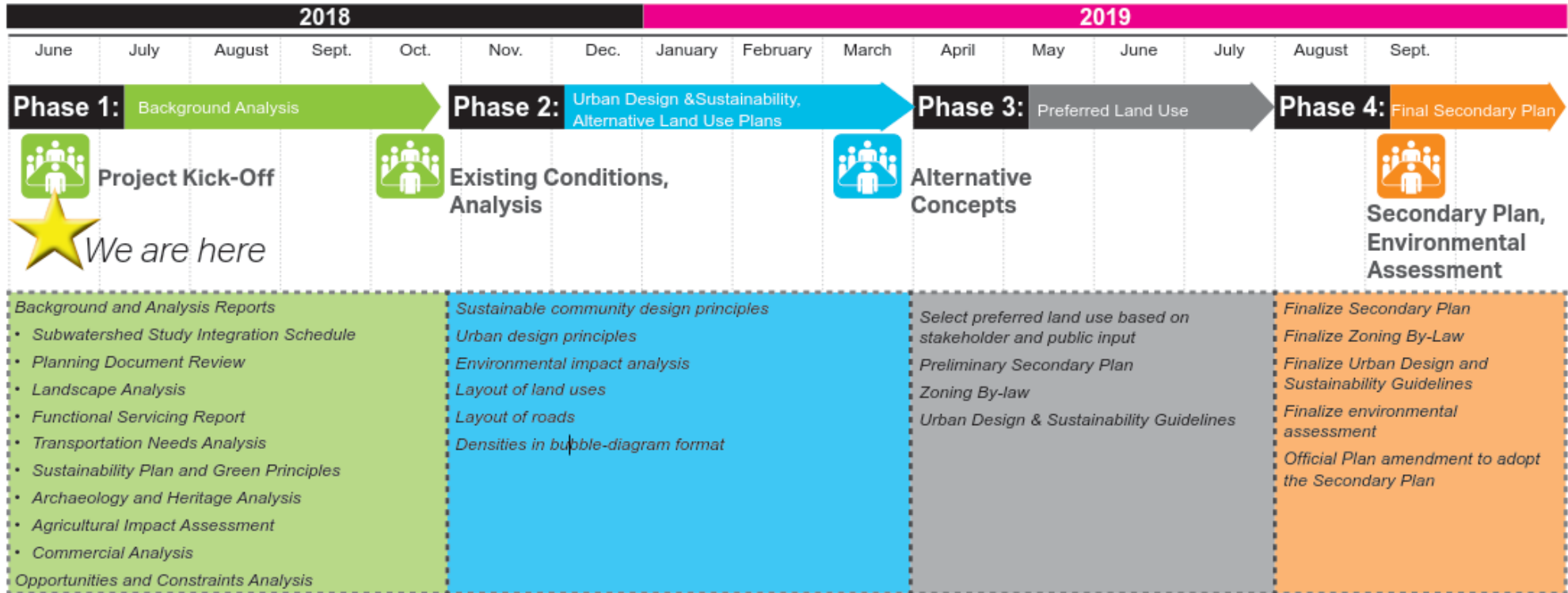
Green infrastructure which minimizes stormwater runoff and improves water quality - including bioswales, rain gardens, green roofs and permeable pavers.



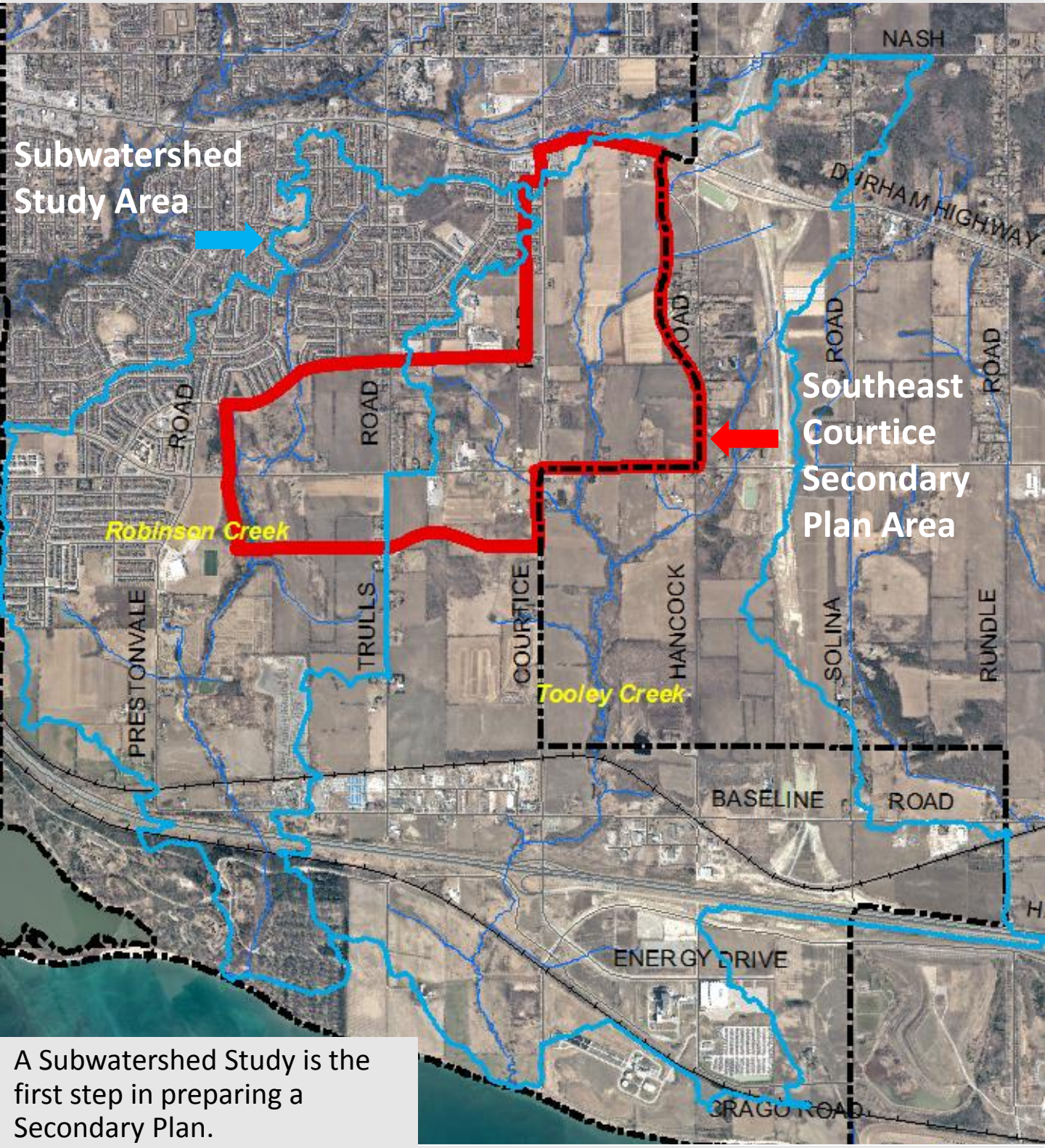
Energy innovation such as renewable energy and storage and electric vehicle charging.

Southeast Courtyce Secondary Plan

Project Schedule



Robinson Creek and Tooley Creek Subwatershed Study



A Subwatershed Study is the first step in preparing a Secondary Plan.

Recommendations from the Subwatershed Plan will be implemented via the Secondary Plan policy framework and the subsequent build out of the neighbourhoods.

