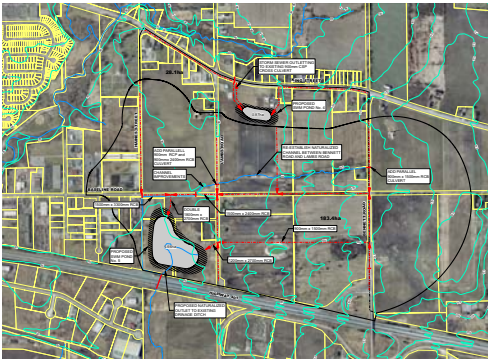


# open space + servicing

The open space network will help create a strong 'sense of place' for employees and visitors to the Park. This network reinforces the natural features of the study area by integrating ecological function with servicing and building design.

The Master Drainage Plan recommends a stormwater management system that reinforces existing natural functions into the servicing infrastructure of the Park: Stormwater runoff would be routed down Baseline Road to a storm water management pond generally located north of Hwy 401 between Lambs Road and the extension of Haines Street. The stormwater pond is also a key feature of the open space network, providing a setting for potential amenities. It could eventually form part of the Park's 'Gateway' when, and if, the interchange is moved, providing a 'signature' identity for the site. Likewise, Bennett Creek will form the spine of the Park's open space network. Future buildings along the channel will integrate the storm water system into their landscape design, creating a cohesive development pattern along this important natural feature.

Future sanitary sewer servicing infrastructure expansion will facilitate development opportunities for the site. Expansion possibilities for future consideration are local and/or trunk sewers on Hwy. 2, Haines Street, Lambs Road, Bennett Road and Baseline Road.



bennett creek master drainage plan