



# WELCOME



## **MUNICIPAL CLASS ENVIRONMENTAL ASSESSMENT PUMPING STATION, FORCEMAIN AND GRAVITY SEWER TO DIVERT SANITARY SEWAGE FLOWS FROM BOWMANVILLE TO COURTICE IN THE MUNICIPALITY OF CLARINGTON**

ALONG BASELINE ROAD FROM LIBERTY STREET TO COURTICE ROAD

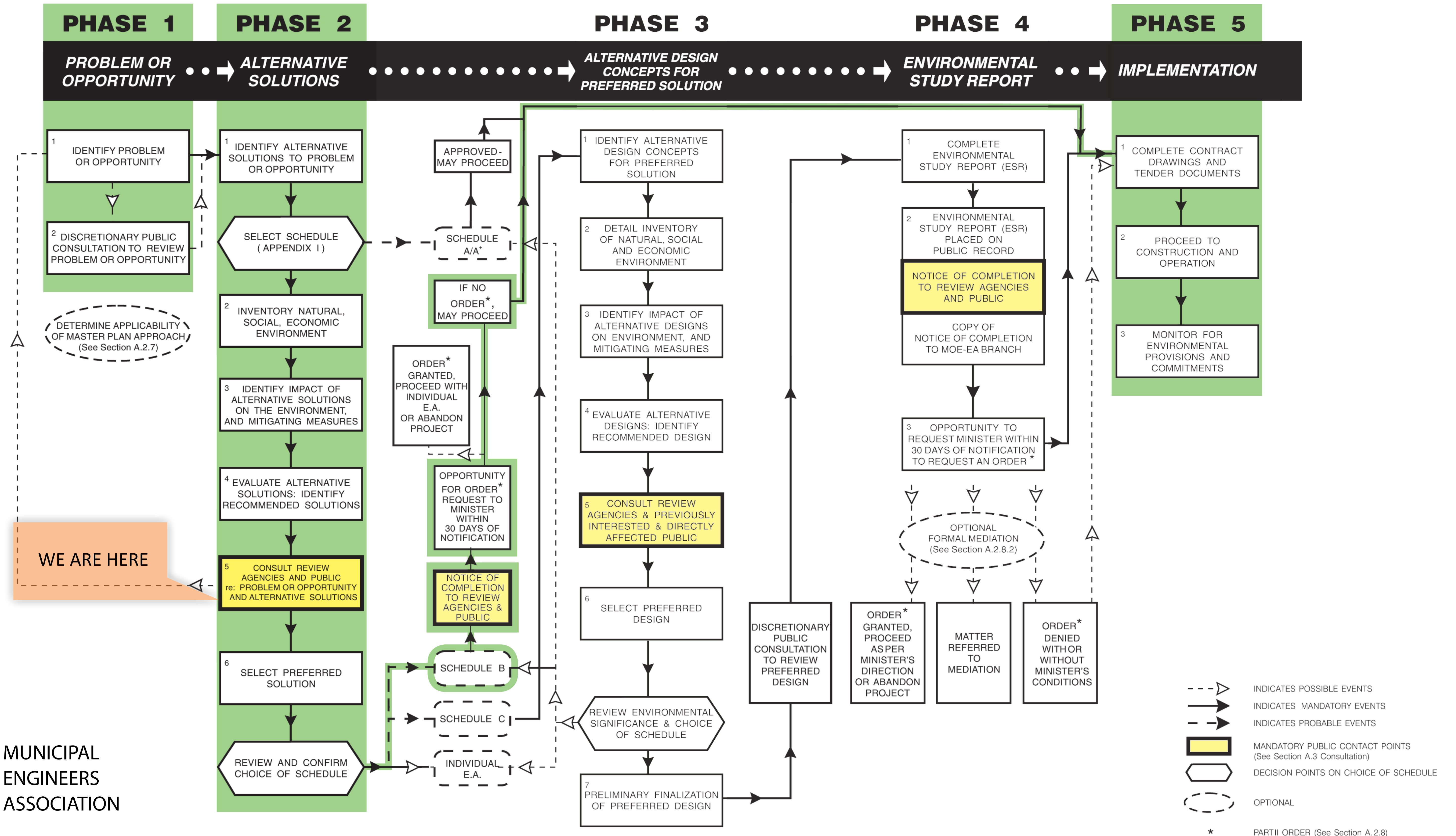
### **PUBLIC INFORMATION CENTRE #2**

**NOVEMBER 17, 2010**

**GARNET RICKARD CENTRE  
MULTI-PURPOSE ROOM  
2440 KING STREET WEST  
BOWMANVILLE, ON**

**2 PM TO 4 PM & 6 PM TO 8 PM**

# MUNICIPAL CLASS EA PROCESS



WE ARE HERE

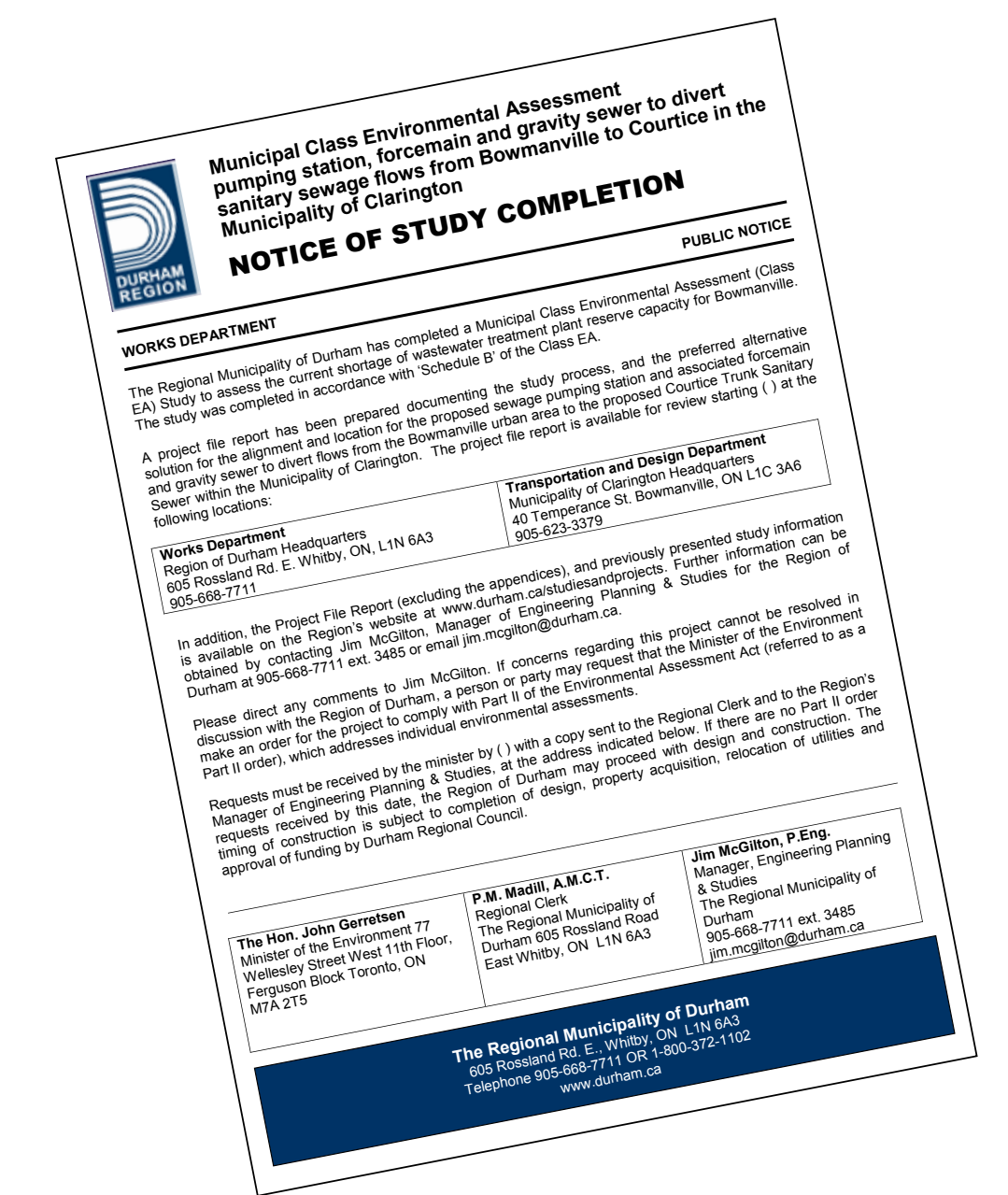
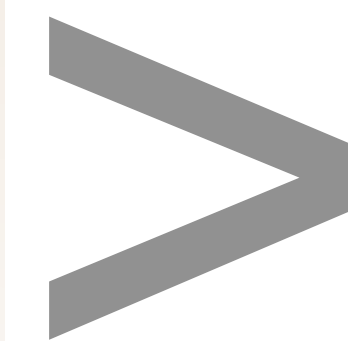
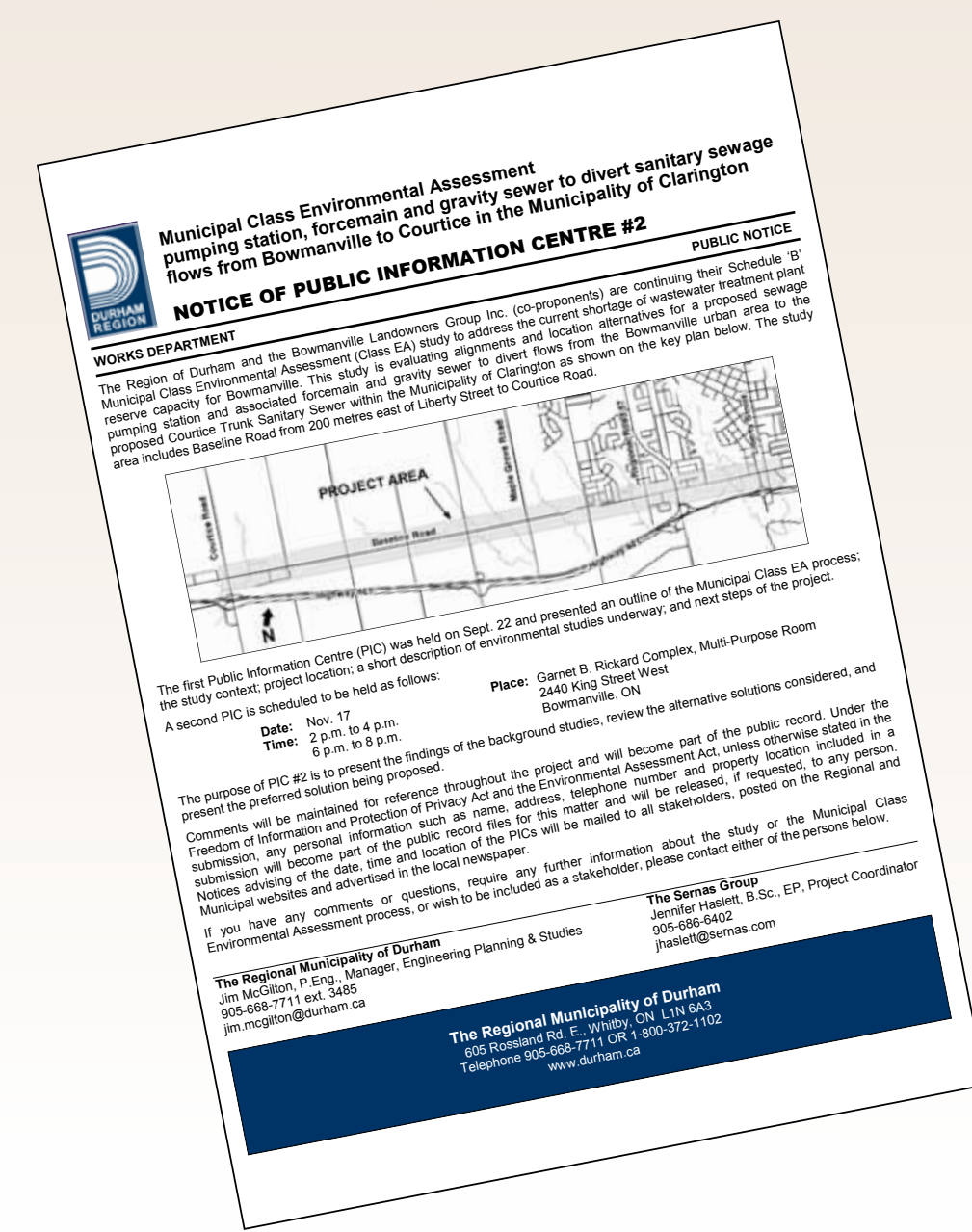
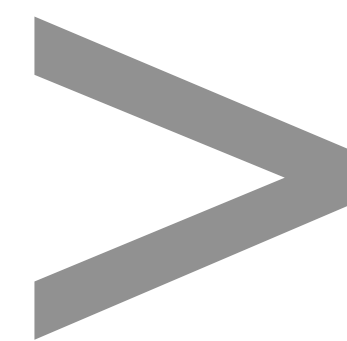
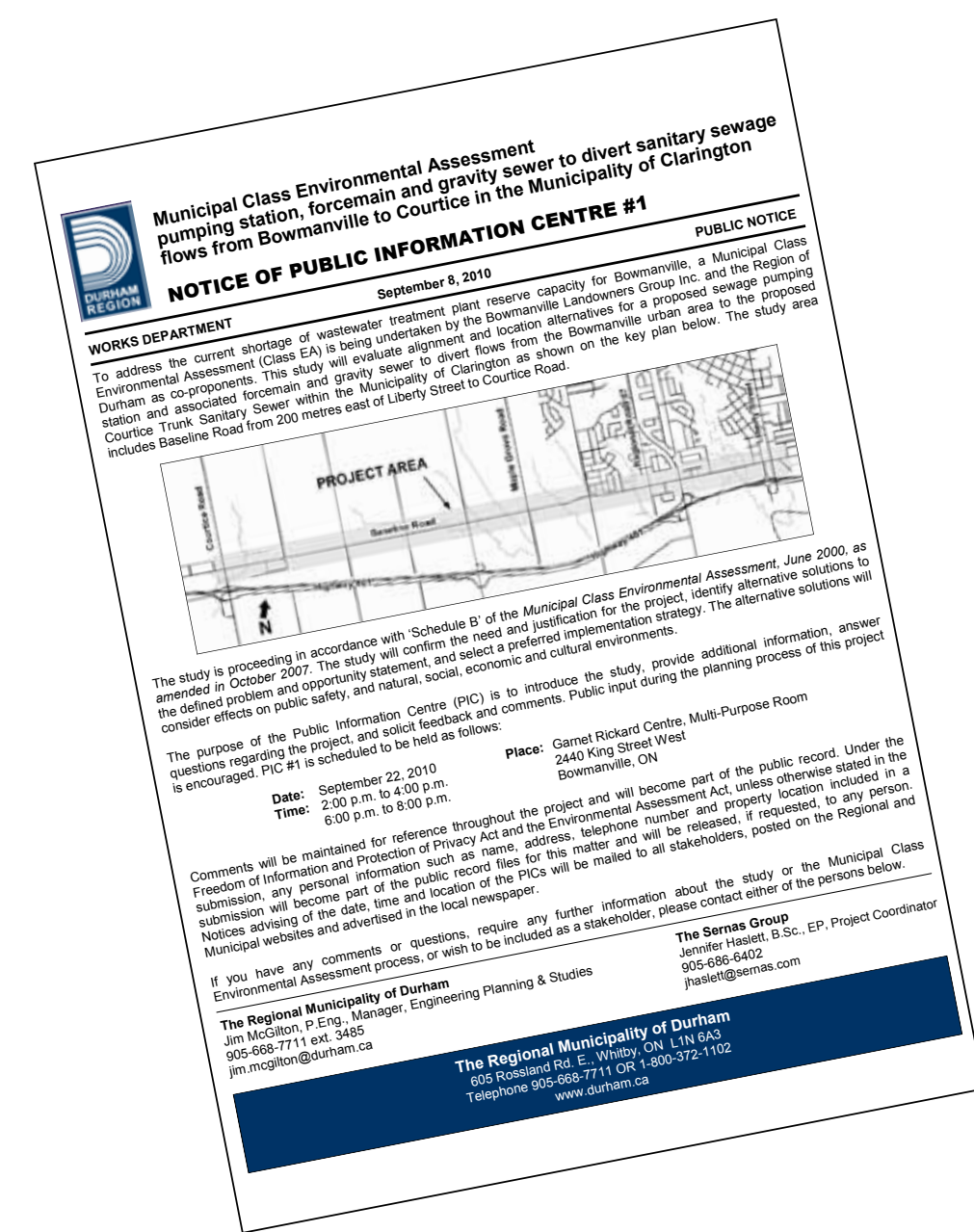
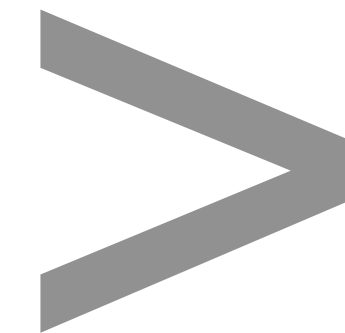
# PUBLIC CONSULTATION PLAN

NOTICE OF  
STUDY COMMENCEMENT

NOTICE OF  
PUBLIC INFORMATION CENTRE #1

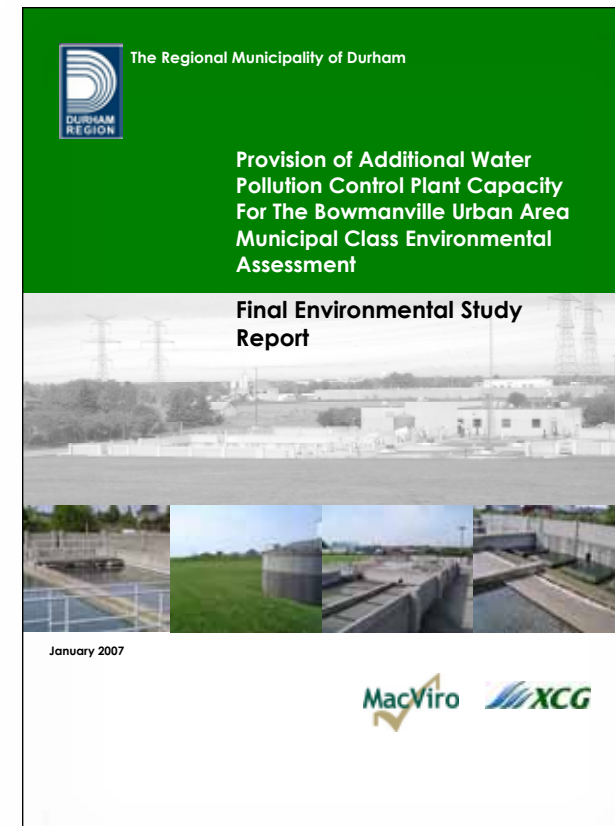
NOTICE OF  
PUBLIC INFORMATION CENTRE #2

NOTICE OF  
STUDY COMPLETION



## THERE ARE 4 KEY POINTS OF CONTACT FOR THIS PROJECT AS SHOWN ABOVE.

- At each point of contact, the Notices are circulated by hand delivery and regular mail to all properties in the general study area.
- Follow-up consultation with approval agencies, government ministries, and First Nations is on-going to confirm receipt of Notices and engage in meaningful dialogue.
- All Notices are advertised in *Clarington This Week* and placed on the Region of Durham and Municipality of Clarington websites.
- Comment forms are available at all Public Information Centres, and contact information is provided on all notices to allow for any comments or questions that may arise during this EA study.



## 2007

### PROVISION OF ADDITIONAL WATER POLLUTION CONTROL PLANT CAPACITY FOR THE BOWMANVILLE URBAN AREA MUNICIPAL CLASS ENVIRONMENTAL ASSESSMENT

The Regional Municipality of Durham undertook a Municipal Class Environmental Assessment study for the provision of additional wastewater treatment capacity to handle future flows from the Bowmanville Urban Area. The **PURPOSE** of the study was to evaluate alternative solutions for achieving the increased capacity required.

Based on the projected average day sewage flows for the Bowmanville Urban Area, it was estimated that the existing rated capacity of 13,638 m<sup>3</sup>/day for the Port Darlington Water Pollution Control Plant would be exceeded by the year 2008.

#### ALTERNATIVE SOLUTIONS CONSIDERED:

1. Do nothing or limit growth in the Bowmanville Urban Area
2. Pump sewage to the existing Newcastle WPCP
3. Expand the existing Port Darlington WPCP
4. Construct a new WPCP in Bowmanville
5. Pump sewage to Courtice WPCP

#### PREFERRED SOLUTION

The preferred solution was option #3: **expansion of the existing capacity of the Port Darlington WPCP from 13,638 m<sup>3</sup>/day to 27,276 m<sup>3</sup>/day**. This would allow for sufficient plant capacity to treat projected sewage flows up to approximately the year 2023. The Region of Durham is now proceeding with design of the Port Darlington WPCP expansion. The expansion is projected to be operational in 2013.

## 2010

### MUNICIPAL CLASS ENVIRONMENTAL ASSESSMENT PUMPING STATION, FORCEMAIN AND GRAVITY SEWER DIVERSION IN BOWMANVILLE TO COURTICE IN THE MUNICIPALITY OF CLARINGTON

To address sewage capacity issues related to the Bowmanville Urban Area in the short-term (until such time as the Port Darlington WPCP is operational), the Region of Durham and the Bowmanville Landowners Group Inc. have initiated a Municipal Class Environmental Assessment to investigate option #5 from the 2007 study.

In order to address the current shortage of wastewater treatment plant reserve capacity for Bowmanville, a Schedule 'B' Class Environmental Assessment is being undertaken to determine if an interim diversion of wastewater flows from the existing Port Darlington Water Pollution Control Plant (WPCP) to the Courtice WPCP through the construction of a pumping station, forcemain and gravity sewer will address the medium and long term servicing needs of the existing and potentially expanded Bowmanville Urban Area.

This study is currently in Phase 2 of the Environmental Assessment.

**THIS IS THE CURRENT STUDY.**



## 2009

### COURTICE TRUNK SANITARY SEWER CLASS ENVIRONMENTAL ASSESSMENT

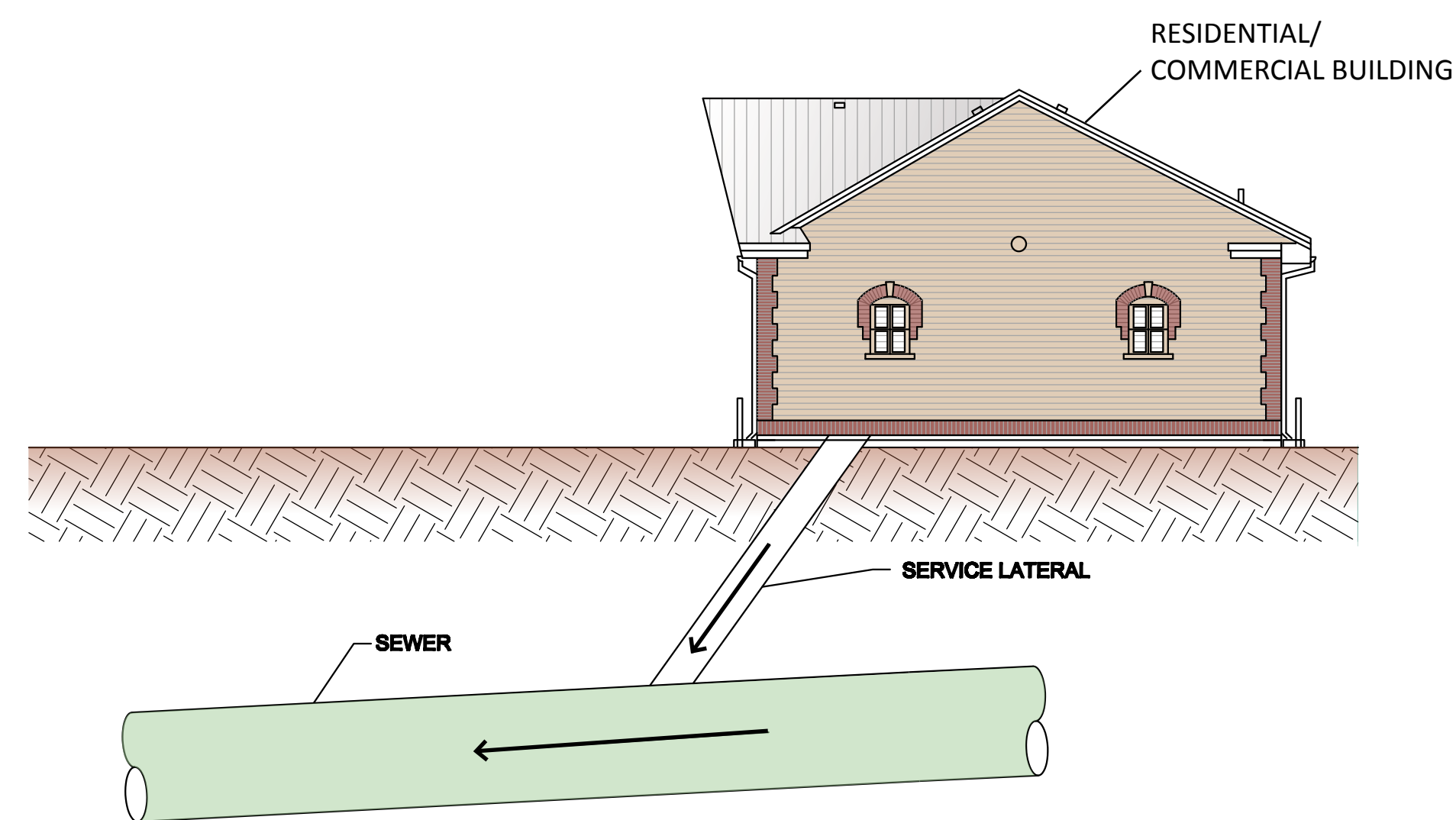
The Regional Municipality of Durham is currently undertaking a Municipal Class Environmental Assessment study for the construction of a trunk sanitary sewer to service the communities of Oshawa and Courtice. In accordance with the Region's wastewater servicing strategy, the sanitary sewer is planned to convey sanitary flows from north Whitby (Brooklin), north Oshawa, Courtice, and west Bowmanville to the Courtice Water Pollution Control Plant. The main **OBJECTIVES** of the study are to identify sanitary sewer servicing alternatives, evaluate the environmental impacts of each alternative, and select the preferred alternative for the Courtice Trunk Sanitary Sewer.

#### PUBLIC INFORMATION CENTRE NO. 2

The second Public Information Centre was held on Thursday November 4, 2010 to present the recommended alternative for the location of the sewer. The study is being carried out in accordance with Schedule 'B' of the Municipal Class EA process. The Region of Durham will assess the comments received, finalize the recommendation and release the Project File Report for public review early next year.

The Courtice Trunk Sanitary Sewer will serve as the connection point for the proposed Sewage Diversion that is the subject of the 2010 EA.

## GRAVITY SEWER

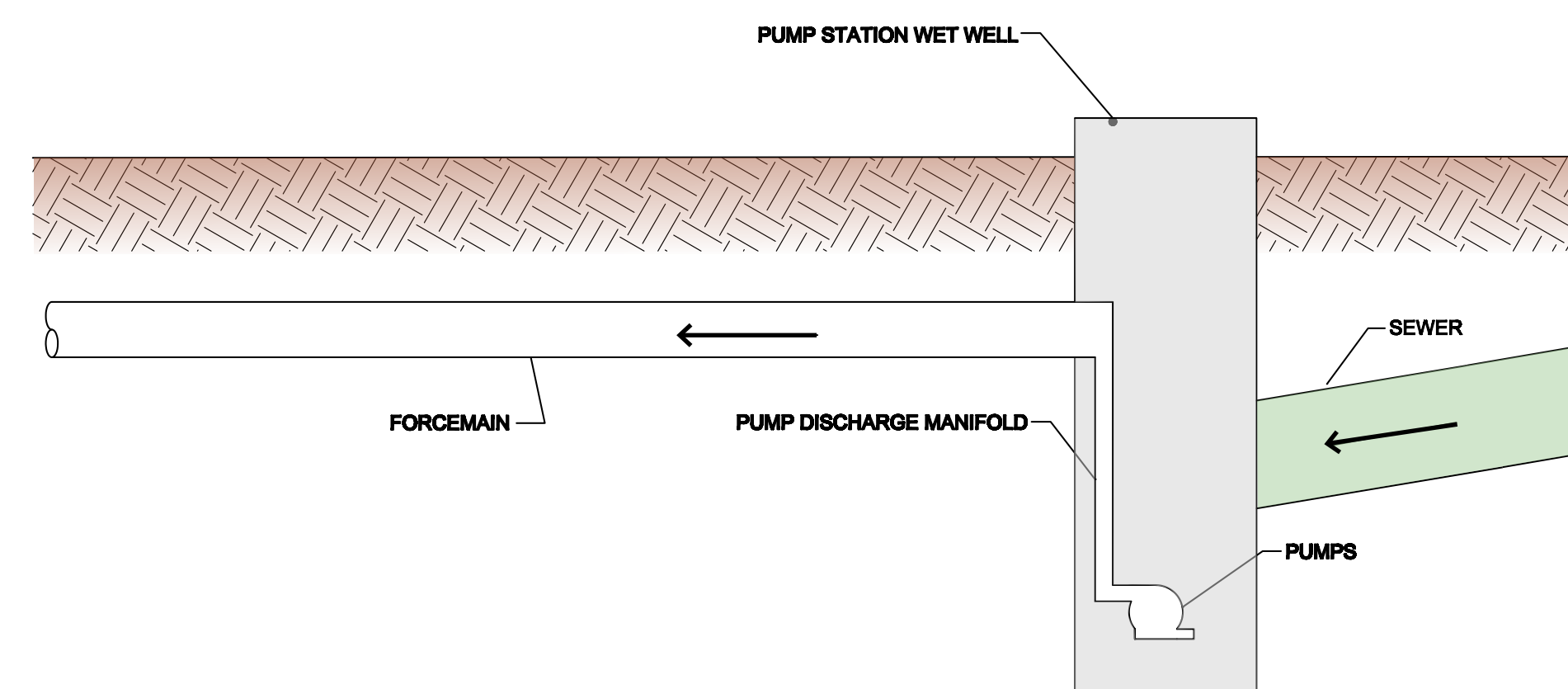


The **PURPOSE** of a **GRAVITY SEWER** is to provide sanitary collection services to residential and commercial buildings. Features of a typical sanitary sewer is described below:

- Connected to residences and buildings with sanitary connections (service laterals)
- Sewers are installed on a slope to induce gravity flow
- Discharges into a pump station wet well or treatment facility

VS.

## FORCEMAIN



The **PURPOSE** of a **FORCEMAIN** is to convey sanitary flows from a pump station wet well to a treatment plant or a sewer. Features of a typical forcemain is described below:

- A forcemain does not provide any direct collection services to residences or buildings
- Is typically smaller in diameter than sewers
- Is installed without a slope and flows under pressure induced by pumps

## EXAMPLE OF A PUMPING STATION

